

ಇಲ್ಲಂಟೆ ತೆಲ್ಲಿಲಾಂಟೆದನಿ  
ಮಾ ವಿಶ್ವಾಸಿಂ



*Right Investment - For Comfortable Future*



## *Your Ultimate Fitness Mantra*

Indulge in a luxurious experience at the elite Clubhouse, designed for fitness enthusiasts, relaxation seekers, and those who love to entertain in style. Impeccably maintained, this haven offers state-of-the-art facilities for your enjoyment. With dedicated play areas for adults and children, gather your friends for friendly sports competitions. Our play area ensures safety with soft sandpits for little adventurers. Enjoy endless fun and unforgettable moments!



Spacious interiors



Play zone



Indoor games



Modern amenities



Gym



Banquet hall



Swimming pool



Coffee Lounge



Kids zone



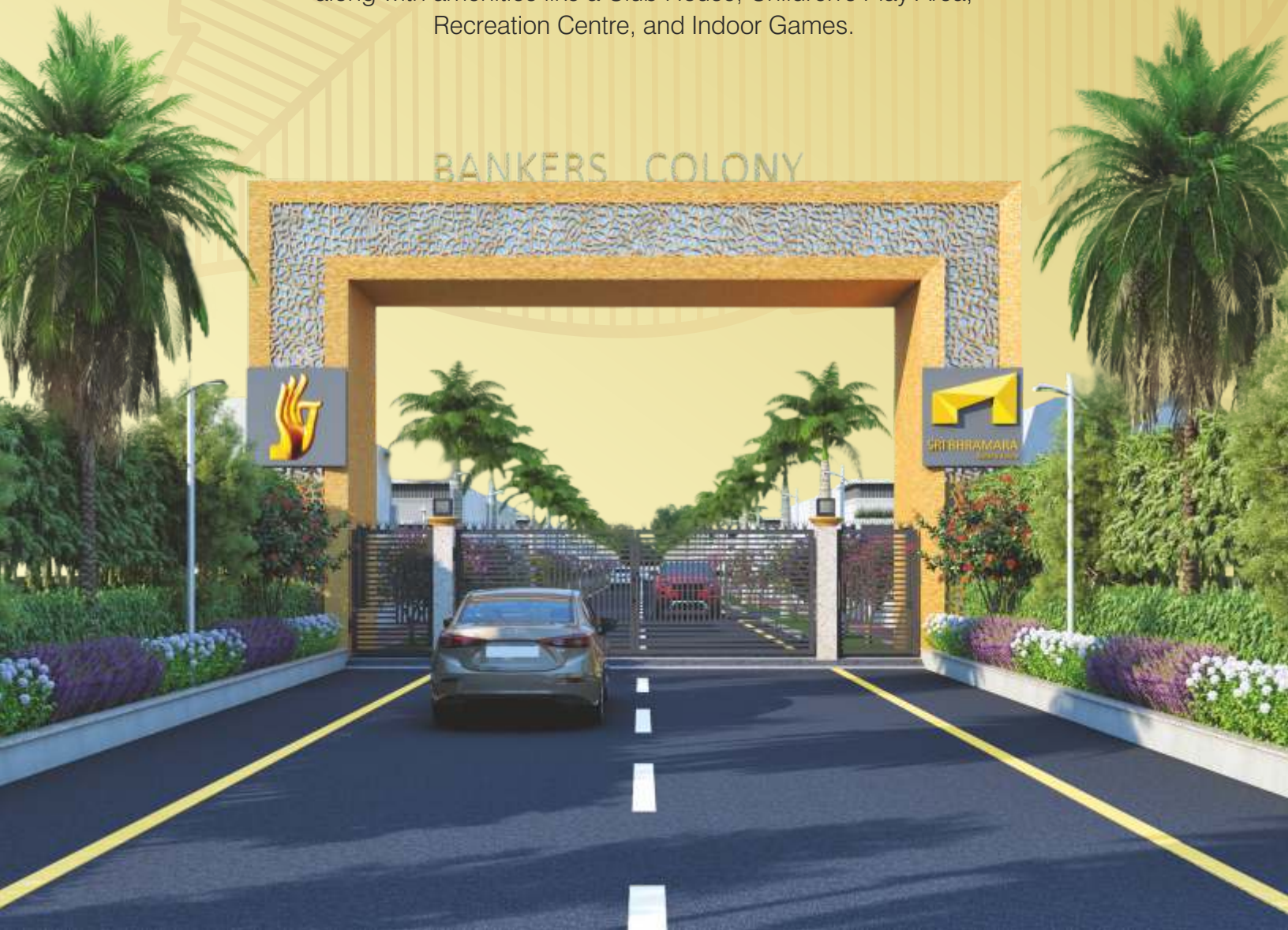
## *Innovative Builders for Modern Living*

Sri Bhramara, a renowned real estate brand, has an impressive portfolio of innovative projects, superior craftsmanship, and satisfied clients.

With over **7000+ happy households** and strong referrals, their commitment to excellence is evident.

Bankers have displayed unwavering dedication and relentless efforts in assisting us during challenging times such as the COVID-19 crisis, consistently extending their support. As a token of appreciation for their invaluable contributions, we would like to express our gratitude.

Presenting Sri Bhramara **Bankers' Colony** in **Gangur**, Vijayawada, offering **170 Individual houses** exclusively for bank employees. The community features Simplex houses on expansive acres, along with amenities like a Club House, Children's Play Area, Recreation Centre, and Indoor Games.





# Tentative Layout plan



**Sri Bhramara**  
**BANKERS' COLONY**  
@Gangur, Vijayawada



EXISTING DONKA ROAD

1.8 km

0.8 km

0.3 km

**BANDAR ROAD NH-65 (Old NH-9)**

← To Benz Circle (8 km)

→ To Kankipadu (6 km)

→ To Machilipatnam (57 km)

Plan Showing D.No.18/4(P);  
22/1;23/2(P), 3,4,5 23/6; 24;  
(P)Ganguru, Penamaluru Mandal  
Krishna District.

## Project Highlights

- Grand amenities
- Well facilitated private Club House
- Kids play zone
- Walking track
- Outdoor games
- Open Amphitheatre
- Compound wall all around the layout
- Entrance arch with security
- 40 feet CC roads
- Underground cabling for electricity
- Overhead water tank with pipeline
- Underground Drainage & STP
- Plot with name plates
- Rainwater harvesting pits
- 100% Clear Title
- Planned perfectly as per Vaasthu

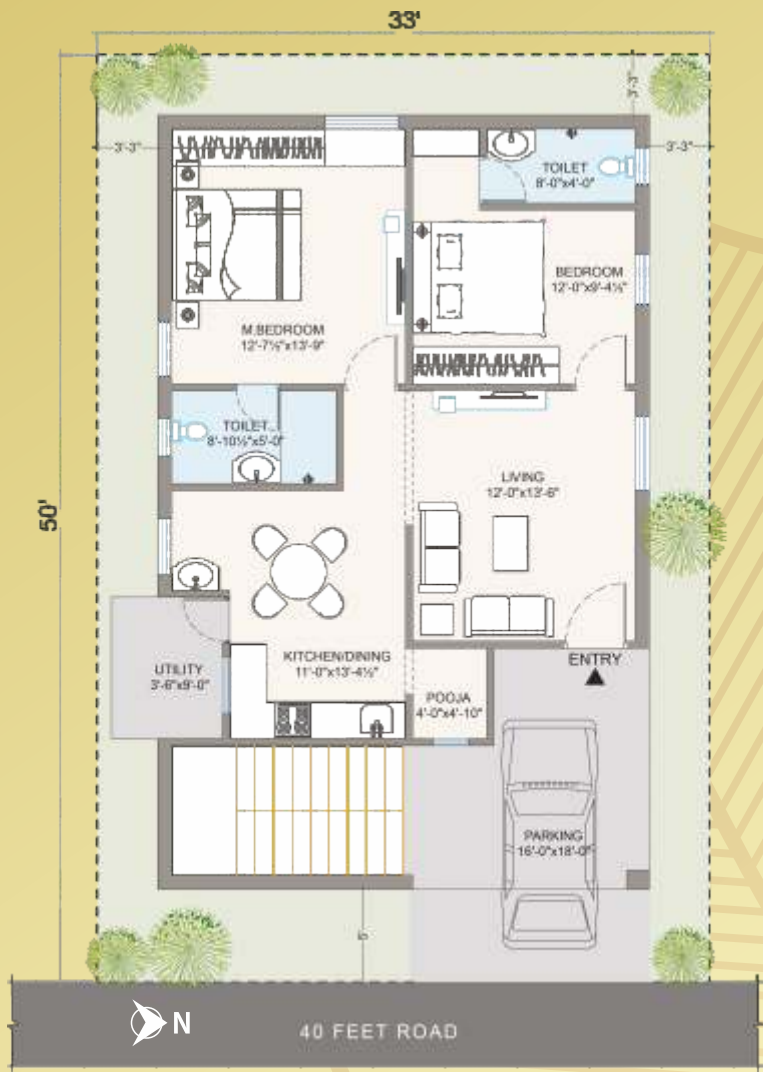
OPEN SPACE  
AND UTILITIES  
Ac 1.28 32 Cents

30(P)



Beautiful Homes, Beautiful Life

Discover pure joy and luxury in our inviting homes. These 1106 square feet Simplex houses offer contemporary amenities, stylish interiors, and a sophisticated ambiance. Bankers' Colony in Gangur is the epitome of modern living, reflecting your refined lifestyle.



EAST FLOOR PLAN

PLOT AREA - 33'x50'  
183 SQYDS  
BUILT-UP AREA - 1106 SQFT



WEST FLOOR PLAN

PLOT AREA - 33'x50'  
183 SQYDS  
BUILT-UP AREA - 1106 SQFT



## Location Map



## Locational Benefits

**10** minutes drive to **Benz Circle**

**15** minutes drive to **Pandit Nehru Bus Station**

**20** minutes drive to **Gannavaram Airport**

**20** minutes drive to **Kanaka Durga Temple**

**20** minutes drive to **Vijayawada Railway Station**

This project is all about living in total comfort and providing bank employees with a high-quality living experience.

**Sri Bhramara**  
**BANKERS' COLONY**  
@Gangur, Vijayawada



Site Location



www.sribhramara.com

## SRI BHRAMARA TOWNSHIPS PVT. LTD.

Corporate Office  
Vishnu Nilayam, Door. No. 59A-15-33,  
Badraiah Nagar, Panta Kaalva Road,  
NTR Circle, Patamata, Vijayawada. A.P. - 520 010

Registered Office  
D.No. 6-10-28, 2nd Floor, Priyanka Complex,  
10/1, Arundalpet, Guntur, A.P. - 522 002  
Ph: 0863 - 2353299

GUNTUR | KRISHNA | N.T.R | BAPATLA | PALNADU | PRAKASAM

E: [info@sribhramara.com](mailto:info@sribhramara.com)

Note: This brochure is only a conceptual presentation and not a legal offering. The promoters reserve right to make changes in plans, elevation and specifications as deemed fit.