



**SRI BHRAMARA
BVSr's
HOMES**



@ Darsi, Prakasam Dist.





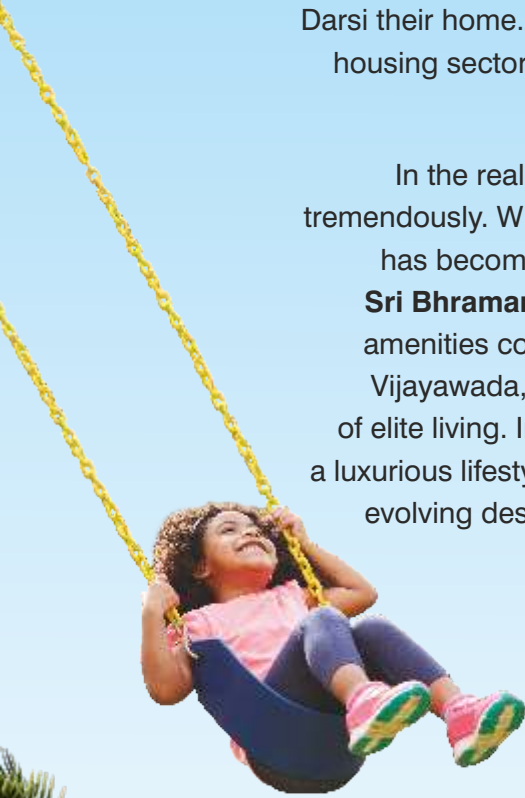
Sri Bhramara Townships has been a trailblazer, introducing innovative and spectacular projects that have redefined the real estate landscape.

As a symbol of progress and with a keen instinct for selecting advantageous locations, Sri Bhramara has strategically developed numerous projects. Offering luxurious and elegant homes, Sri Bhramara has earned a permanent place in the hearts of its customers. The latest addition to our portfolio- BVSR's Homes, is another unique project, a beautiful offering for those seeking a wonderful living experience. Sri Bhramara Townships continues its legacy of creating spaces that go beyond expectations.

Darsi's Exclusive Properties Your Gateway to Good Living and Prosperity

Darsi, in Prakasam district, stands out among towns with its unique features and numerous advantages, experiencing rapid development. It attracts individuals, including teachers, government employees, and business professionals, from hundreds of surrounding villages, who are making Darsi their home. As a consequence, Darsi is witnessing a huge demand in the housing sector, propelling its swift expansion and establishing it as a focal point for spectacular growth in the region.

In the realm of commerce and construction, Darsi is progressing tremendously. Within its municipal limits, a strategically located **16.5 acre** area has become the site of Sri Bhramara Townships' ambitious project, **Sri Bhramara BVSR's Homes**. With ultra-modern urban luxuries and amenities comparable to major cities like Hyderabad, Bangalore, and Vijayawada, Sri Bhramara BVSR's Homes aims to become a symbol of elite living. Investing in Sri Bhramara BVSR's Homes not only promises a luxurious lifestyle but also ensures a lucrative future. Darsi is a dynamic and evolving destination that beckons those seeking both a sophisticated lifestyle and financial prosperity.





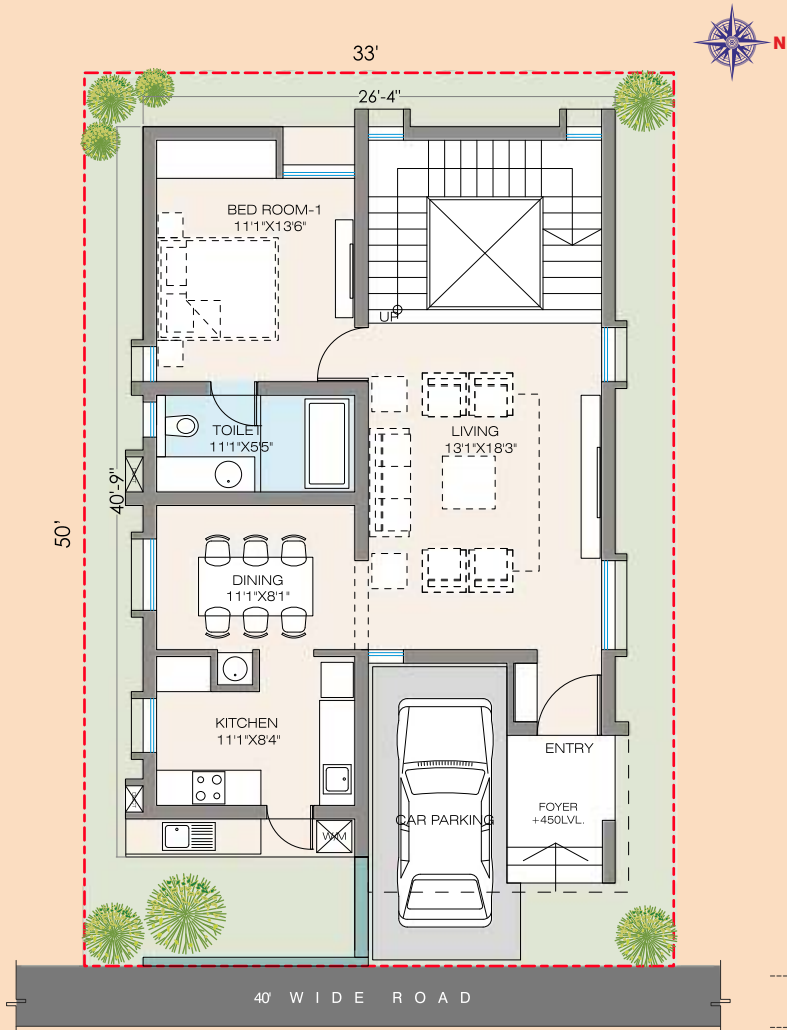
EAST DUPLEX HOUSE

PLOT AREA 33'X50', 183 Sq.Yds.
TOTAL BUILT UP AREA: 2486 Sq.Ft.



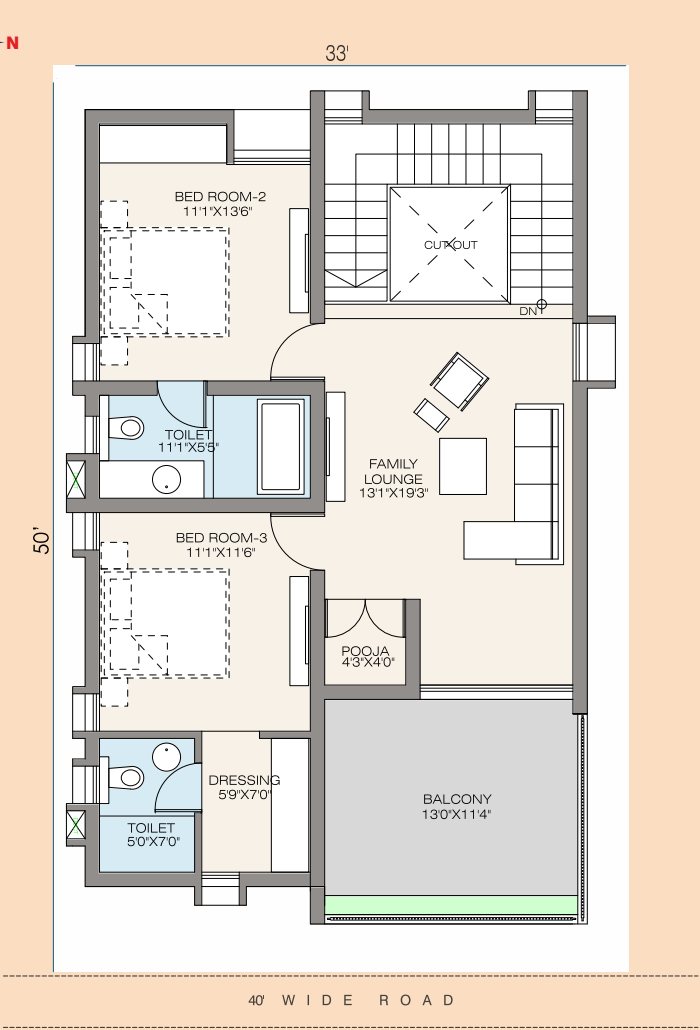
WEST DUPLEX HOUSE

PLOT AREA 33'X50', 183 Sq.Yds.
TOTAL BUILT UP AREA: 2423 Sq.Ft.



GROUND FLOOR

BUILT UP AREA: 1110 Sq.Ft



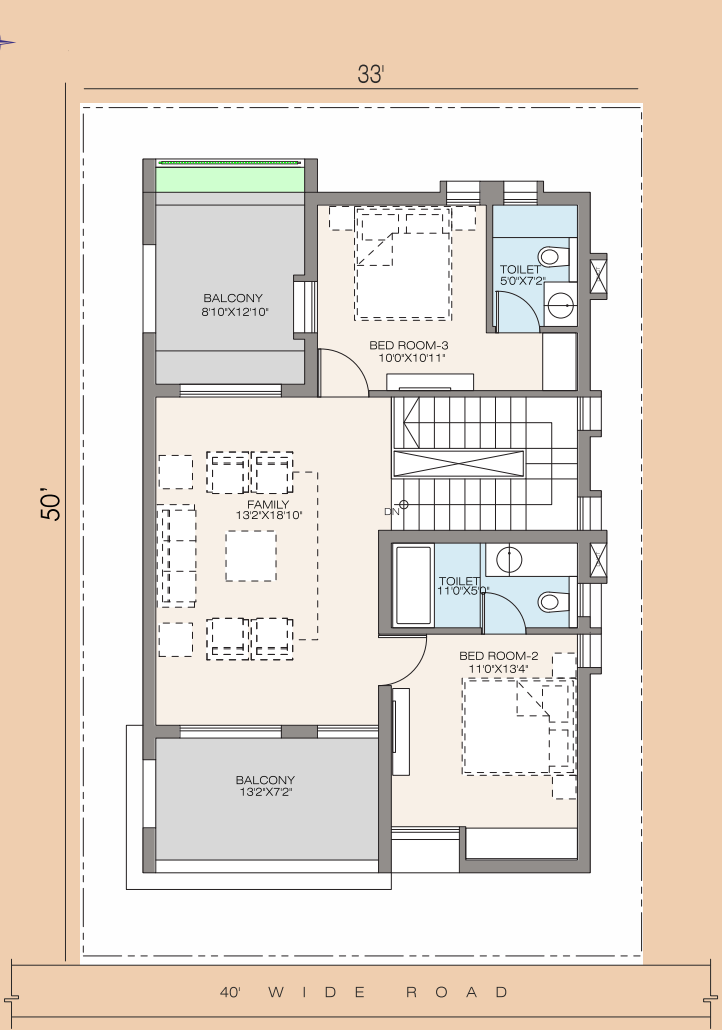
FIRST FLOOR

BUILT UP AREA: 1110 SFT
TERRACE AREA: 266 Sq.Ft



GROUND FLOOR

BUILT UP AREA: 1102 Sq.Ft



FIRST FLOOR

BUILT UP AREA: 1102 SFT
TERRACE AREA: 219 Sq.Ft

SALIENT FEATURES



- Entrance Arch equipped with 24-hour CCTV surveillance
- Compound wall featuring Solar fencing surrounding the layout
- 40 feet Roads adorned with landscaping on both sides
- Pipeline connection to every plot for convenient access
- Implementation of an Underground drainage system
- Installation of an Underground electric cable line for safety
- Inclusion of Rainwater harvesting pits for sustainable water management
- Designer landscaping to enhance the aesthetic appeal
- Dedicated parks designed exclusively for children and a Walking track for residents' leisure
- 100% Vaasthu Compliant
- 100% Clear Title



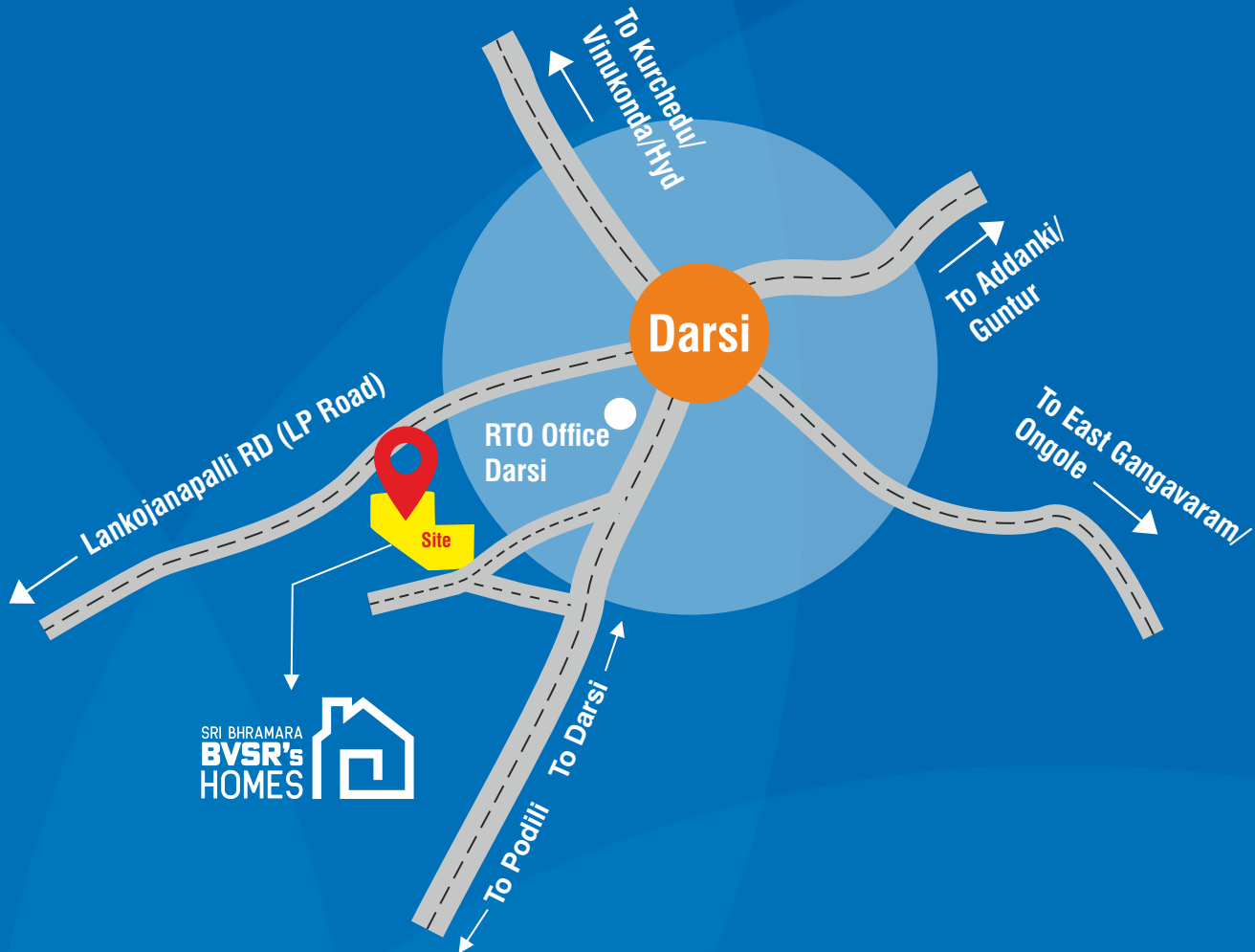
Tentative Layout Plan

SRI BHRAMARA
BVSR's
HOMES
@ Darsi, Prakasam Dist.



PLAN SHOWING THE PROPOSED LAY-OUT IN R.S.Nos:- 882/3B(P); 883/1A1, 2, 3 AND 886/1, 2A, 3(P) OF Darsi VILLAGE AND MANDAL, PRAKASAM DISTRICT.

Location Map



For Bookings Contact:



SRI BHRAMARA TOWNSHIPS PVT. LTD.

Head Office:

1st Floor, APSFC Bhavan,
Industrial Park, Gorantla,
MG Inner Ring Road,
Guntur, A.P. - 522 034.

Site Address:

Sri Bhramara BVSR's Homes
S.No, 883/3, Podili Road,
Darsi, Prakasam Dist.
A.P. - 523 247.



www.sribhramara.com

Guntur | Krishna | N.T.R | Bapatla | Palnadu | Prakasam

E: info@sribhramara.com

Follow us: [f](#) [i](#) [x](#) [v](#)

Note: This brochure is only a conceptual presentation and not a legal offering. The promoters reserve right to make changes in plans, elevation and specifications as deemed fit.