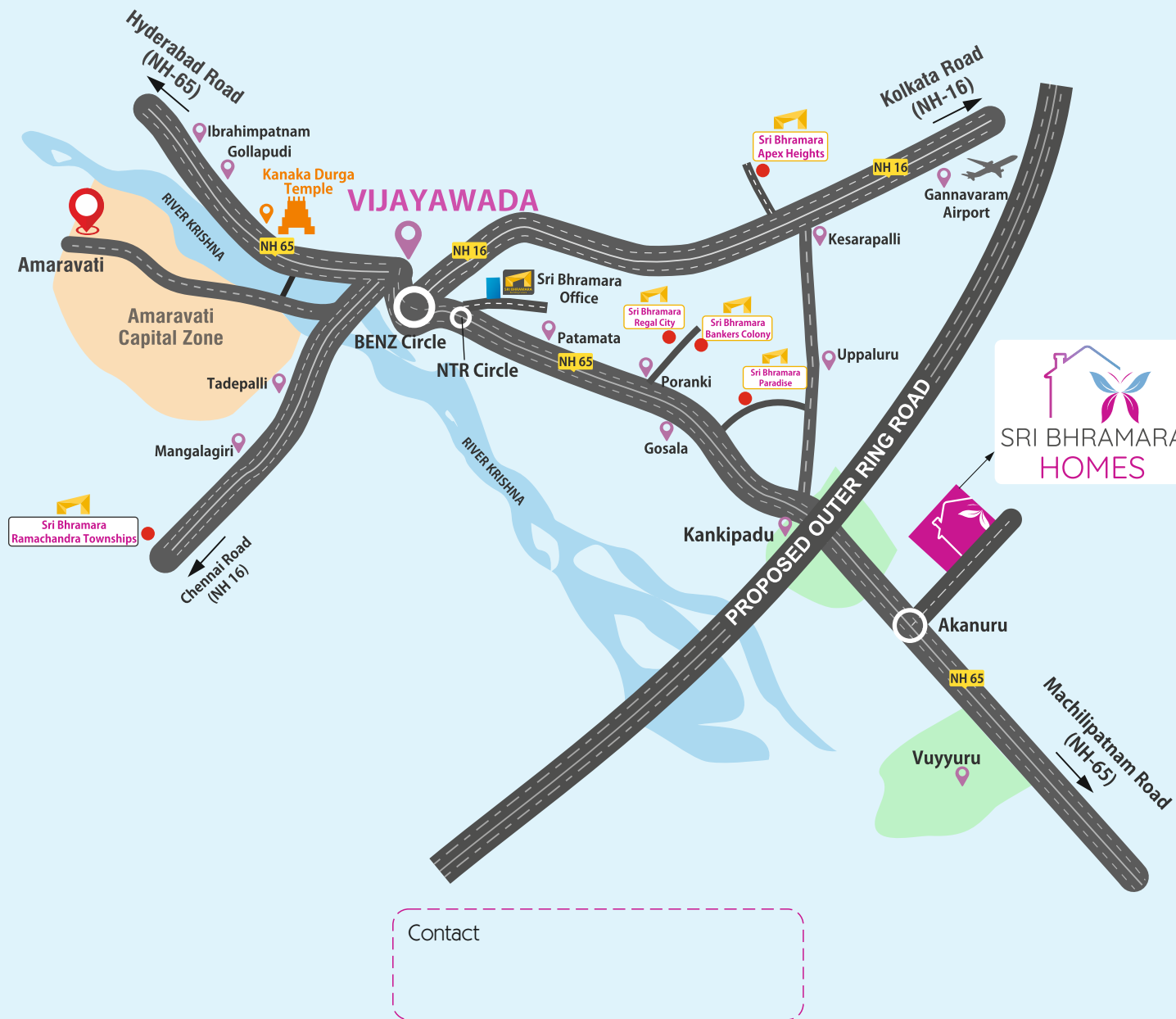


Location Map



Follow us: [f](#) [ig](#) [x](#) [yt](#)



SRI BHRAMARA HOMES

@akunuru, vijayawada

Enhancing your Lifestyles



SRI BHRAMARA GROUP

Corp. office: # 59A-15-33, Vishnu Nilayam, Panta Kaalva Road, NTR Circle, Patamata, Vijayawada - 520 010. A.P.; Tel. 0866 2433060;

H.O Office: Reg. Off: 1st Floor, APSFC Bhavan, Industrial Park, Gorantla, MG Inner Ring Road, Guntur - 522034. A.P., Tel. 0863-2353299

Guntur | Krishna | N.T.R | Bapatla | Palnadu | Prakasam



Scan for Website



Kids Play Area

Designer Parks that inspire

Walking/Jogging Track

Open-Air Gym

Open-Air Gym

Experience Wellness, Fun & Nature – Every Day

At **Sri Bhramara Homes**, we believe that a home should offer more than just walls - it should provide a lifestyle that nurtures your body, mind, and soul. That's why our community is thoughtfully designed with spaces that encourage relaxation, activity, and connection.

Kids' Play Area: safe and joyful space where your little ones can laugh, learn, and grow. Equipped with child-friendly play structures, this area is built to spark creativity and endless fun in a secure environment.

Designer Park: Relax in beautifully landscaped gardens that blend art with nature. Whether it's morning yoga, evening tea, or weekend picnics, our park is a peaceful retreat designed for every member of the family.

Walking & Jogging Track: Embrace a healthy lifestyle with dedicated tracks that wind through the greenery. Start your day with a fresh walk or an energizing jog, right within your community.

Open-Air Gym: Stay fit in nature's lap! Our open gym is equipped with modern workout stations to help you maintain your fitness routine in a refreshing, outdoor setting.

Excellence through Expertise

Sri Bhramara group, under the dynamic leadership of its visionary CMD, **Sri Galla Ramachandra Rao**, has emerged as a trailblazer in the real estate industry. Renowned for its commitment to innovation, quality, and community-focused development, **Sri Bhramara** has redefined modern living through thoughtfully planned projects that seamlessly blend comfort with elegance.

With 10,000+ delighted homeowners and growing, the brand continues to set new benchmarks for excellence and trust in Andhra Pradesh's real estate sector.

Expanding this legacy is an exciting **Sri Bhramara Homes @Akunuru, Vijayawada**. This extraordinary project offers beautifully crafted Simplex Houses & Open Plots.

Every space is thoughtfully designed to deliver serene, living paired with the tranquil charm of the nature.

For those who aspire to embrace a peaceful, luxurious, and nature-blessed lifestyle, **Sri Bhramara's** latest venture is an invitation to a lifetime of joyful memories.



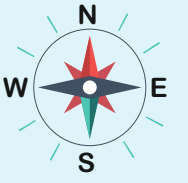
Live close to the city surrounded by nature

Andhra Pradesh is witnessing rapid development, and one of its most promising growth corridors lies near the thriving city of **Vijayawada**. Along the well-connected NH-65, a four-lane National Highway known for its strong commercial and port access, a new opportunity is taking shape - **Sri Bhramara Homes**.

This premium residential project is strategically located between two key hubs: Kankipadu a landmark for villa and residential developments, and Vuyyuru a fast-growing town with a rising workforce and infrastructure development.

Nestled in the peaceful and green surroundings of Akunuru village, **Sri Bhramara Homes** offers the perfect blend of nature and connectivity. With excellent fresh water availability, reliable transportation links, and a serene, pollution-free environment, the project is ideal for families looking to build their dream homes away from the city's congestion, yet close to every convenience.

TENTATIVE LAYOUT PLAN

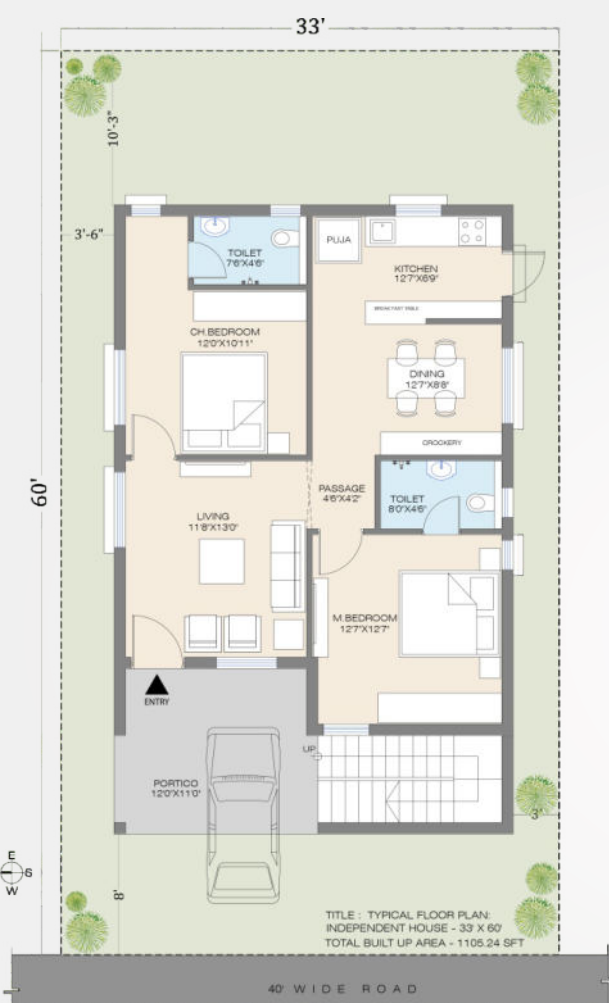


- A Block open plots
- B Block open plots
- Simplex Housing
- Commercial Plots

Key Highlights

- Grand Entrance Arch
- 24/7 Security
- Compound wall featuring solar fencing all around the layout
- Landscaped CC Roads
- Designer Parks
- Kids Play Area
- Open Gym & Walking Track
- Electricity
- Water Tank & Pipeline connection
- Rainwater Harvesting Pits

Plan showing the Proposed Layout @ Akunuru Village, Vuyyuru Mandal, Krishna District.



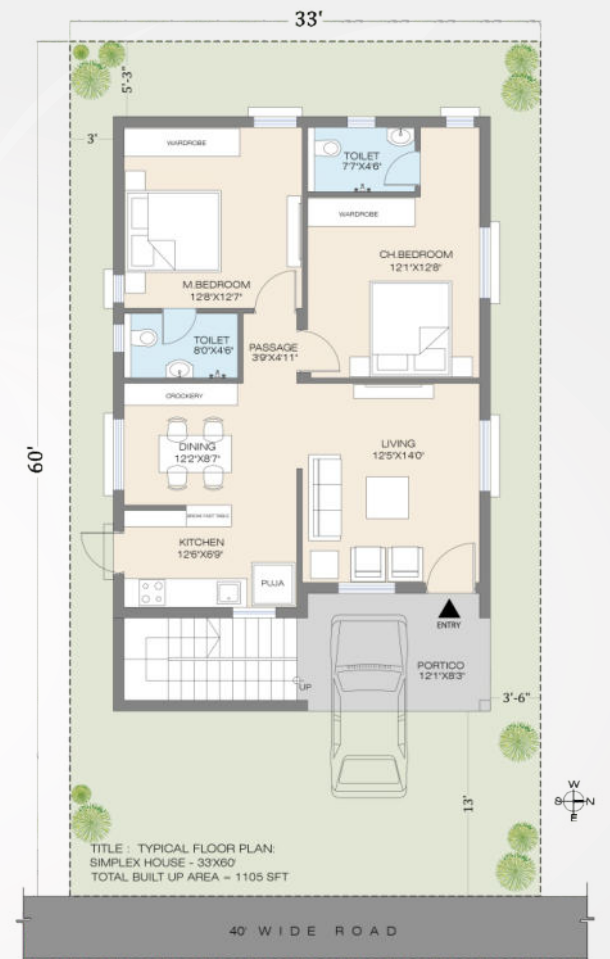
Typical Floor Plan - West

Plot Size - 33'x60'
Plot Area - 220 Sq.yds
Built-up area - 1105 Sq.ft



Where every home tells a story

Discover pure joy and luxury in our inviting homes. These 1106 square feet Simplex houses offer contemporary amenities, and a sophisticated ambiance. Sri Bhamara Homes in Akunuru is the epitome of modern living, reflecting your redefined lifestyle.



Typical Floor Plan - East

Plot Size - 33'x60'
Plot Area - 220 Sq.yds
Built-up area - 1105 Sq.ft